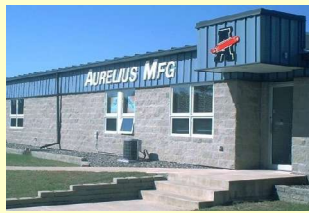




AURELIUS MFG CO
INC

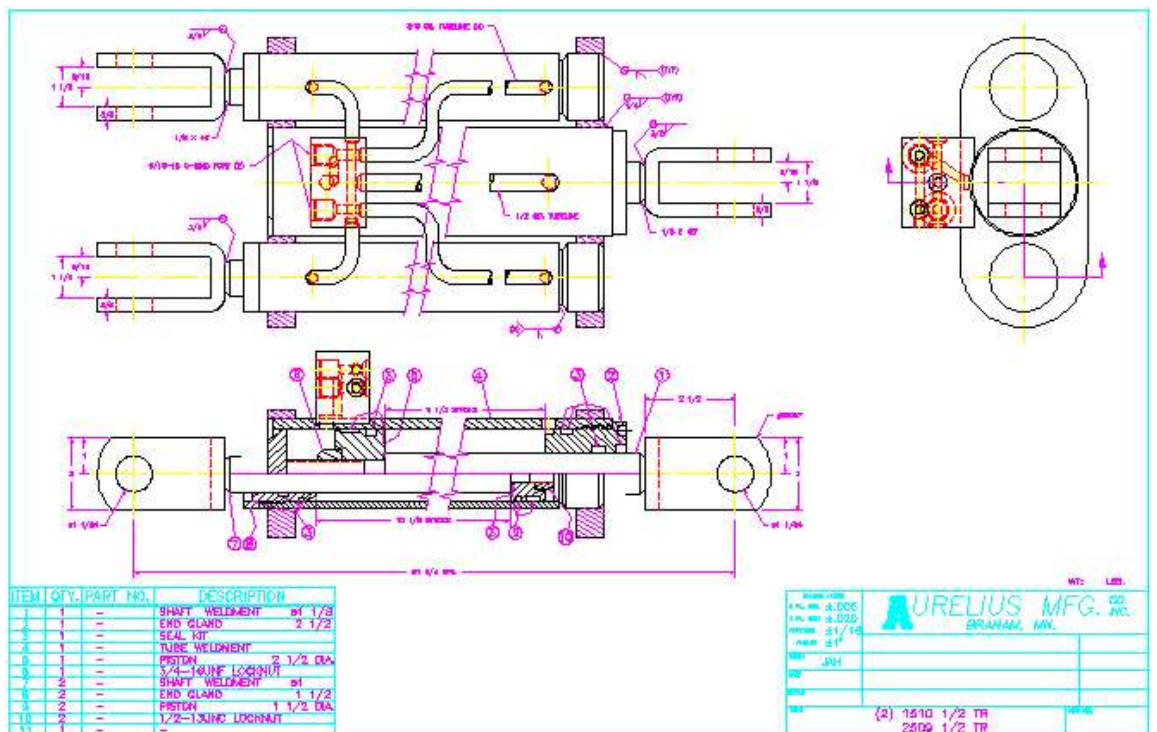
220 S.W. 8TH ST. - P.O. BOX 508
BRAHAM, MN 55006
320-396-3343 FAX 320-396-3346

SOLUTION PROFILE



Custom Welded Hydraulic Cylinders

- Bore – 1 to 6 inches
- Rod – 3/8 to 5 inches
 - hollows & specials
- Stroke – 0 to 20 feet
- Custom porting
 - NPT
 - S.A.E
 - O-ring
 - tube lines
 - specials
- Custom valving
 - Pads
 - Cavities



Requirement: Provide 20" of stroke and a specific mounting configuration that included a closed length of only 21 3/4".

This assembly is designed to overlap the strokes of multiple cylinders providing extended travel, a short closed length, simplified mounting and plumbing, and seals that do not have to cross porting holes.

Contact Aurelius Mfg.

Phone: 320-396-3343
Fax: 320-396-3346
Email: info@aurelius-mfg.com