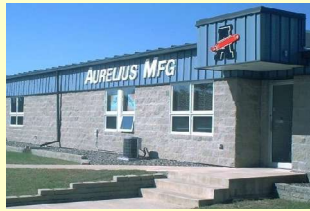




AURELIUS MFG CO
INC

220 S.W. 8TH ST. - P.O. BOX 508
BRAHAM, MN 55006
320-396-3343 FAX 320-396-3346

SOLUTION PROFILE

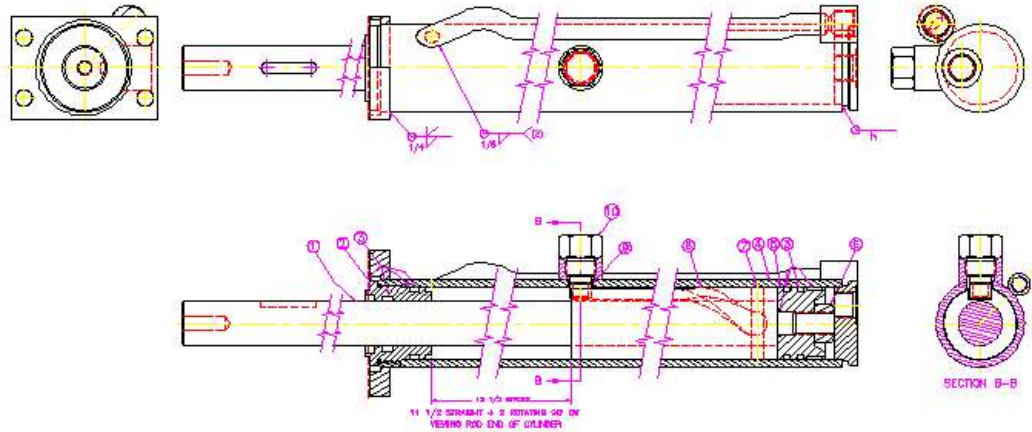


Custom Welded Hydraulic Cylinders

- Bore – 1 to 6 inches
- Rod – 3/8 to 5 inches
 - hollows & specials
- Stroke – 0 to 20 feet
- Custom porting
 - NPT
 - S.A.E
 - O-ring
 - tube lines
 - specials
- Custom valving
 - Pads
 - Cavities

Contact Aurelius Mfg.

Phone: 320-396-3343
Fax: 320-396-3346
Email: info@aurelius-mfg.com



ITEM	QTY	PART NO.	DESCRIPTION
1	1		ROD
2	1		END GLAND
3	1		SEAL KIT
4	1		TUBE WELDMENT
5	1		PISTON
6	1		3/4-18UNF LOCKNUT
7	1		25/8 X 2 1/4 LG. SPRING PIN
8	1		STROKE BLOCK/TUBA TUBE
9	1		CAM FOLLOWER - BUSHING
10	1		CAM FOLLOWER - RETAINER
11	1		
12	1		

WGT. LBS.	
DATE	1/24
DESIGN	
DRAWN	
CHECKED	
APPROVED	

Requirement: Provide a cylinder that would advance straight and rotate 90 degrees in the last few inches of extension.

The cylinder is built with a cam-tube attached to the rod and a follower in the barrel to control the radial position of the rod as required. The follower required refinement to find a configuration that is robust enough to stand up to the rapid cycles of the application. The front flange on the barrel and the rod extension are machined to fit directly into the assembly without the need for adapter brackets.