

AURELIUS MFG CO INC

220 S.W. 8TH ST. - P.O. BOX 508
 BRAHAM, MN 55006
 320-396-3343 FAX 320-396-3346

SOLUTION PROFILE

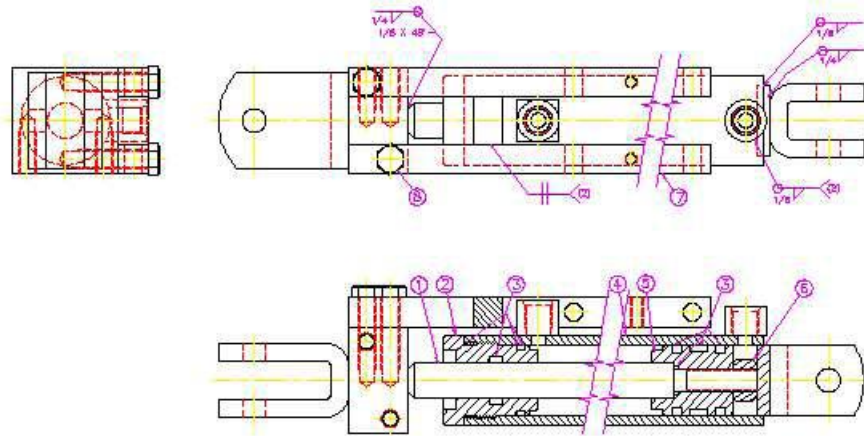


Custom Welded Hydraulic Cylinders

- Bore - 1 to 6 inches
- Rod - 3/8 to 5 inches
 • hollows & specials
- Stroke - 0 to 20 feet
- Custom porting
 - NPT
 - S.A.E. - O-ring
 - tube lines
 - specials
- Custom valving
 - pads
 - cavities
- Integrated sensors
 - linear transducers
 - proximity

Contact
Aurelius Mfg. Co., Inc.

Phone: 320-396-3343
 Fax: 320-396-3346
 Email: info@aurelius-mfg.com



ITEM	QTY	PART NO.	DESCRIPTION
1	1		ROD WELDMENT
2	1		END FLANG
3	1		SEAL KIT
4	1		TUBE WELDMENT
5	1		PISTON
6	1		1/2-20LH LOCKNUT
7	2		EXTENSION STOP WELDMENT
8	1		3/8-24UNF X 1 1/2 LH HHCS

AURELIUS MFG. CO. INC.	
DATE	4-20-08
BY	3-0350
REV	2/1/10
SCALE	1:1
DRW NO.	0491
QTY	1000
UNIT	1507 1/2 TR

Requirement: Provide an economical way to lock the cylinder in closed position for transport and ensure that the rod will not rotate during the cylinder's stroke.

Solution: This cylinder is built with a special rod-end port that also acts as a guide and a stop. Parallel bars attached to the rod clevis run on the sides of the port to prevent rotation during the stroke. The bars include two pin positions. One pin position locks the cylinder in the closed position. The second pin position allows for storage of the pin when the cylinder is in use. The rod mounting is machined to allow the bars to be set in either of two positions as required by the application.