

AURELIUS MFG CO INC

220 S.W. 8TH ST. - P.O. BOX 508
 BRAHAM, MN 55006
 320-396-3343 FAX 320-396-3346

SOLUTION PROFILE

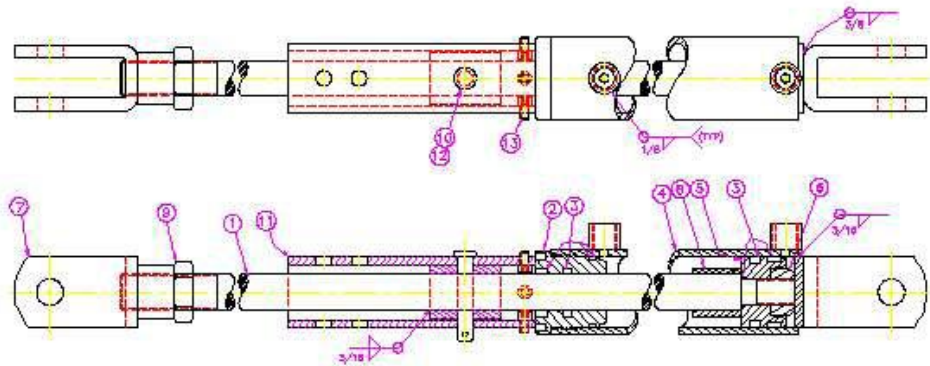


Custom Welded Hydraulic Cylinders

- Bore - 1 to 6 inches
- Rod - 3/8 to 5 inches
 • hollows & specials
- Stroke - 0 to 20 feet
- Custom porting
 - NPT
 - S.A.E. - O-ring
 - tube lines
 - specials
- Custom valving
 - pads
 - cavities
- Integrated sensors
 - linear transducers
 - proximity

Contact
Aurelius Mfg. Co., Inc.

Phone: 320-396-3343
 Fax: 320-396-3346
 Email: info@aurelius-mfg.com



| ITEM | QTY. | PART NO. | DESCRIPTION |
|------|------|----------|---------------------------|
| 1 | 1 | - | ROD |
| 2 | 1 | - | END GLAND |
| 3 | 1 | - | SPAL KIT |
| 4 | 1 | - | TUBE WELDMENT |
| 5 | 1 | - | PISTON |
| 6 | 1 | - | 3/4-18UNF LOCKNUT |
| 7 | 1 | - | THREADED SLEEVES |
| 8 | 1 | - | STROKE BLOCK |
| 9 | 1 | - | 1-18UNS JAM NUT |
| 10 | 1 | - | 62-18 PIN |
| 11 | 1 | - | ADJ. CYL. STOP TUBE |
| 12 | 1 | - | HAIR PIN COTTER |
| 13 | 4 | - | 1/4-20 X 3/8 SHCS (NYLON) |

WT: LBS.

UNLESS NOTED
 ± PL. DIM. ±.0005
 ± PL. DIM. ±.0050
 FINISH ±1/16
 ANGLES ±1°

AURELIUS MFG. CO. INC.
 BRAHAM, MN.

DATE: JAH
 BY:
 CHECKED:
 TITLE:

Requirement: Provide a low cost way to be certain that the cylinder is in one of four positions when closed.

Solution: This cylinder is built with a stop tube on the rod extension. Three pin positions in the stop tube control the closed length of the cylinder. The operator can choose a position and move the stop tube and pin to set the proper closed length. The pin and tube is easily moved yet offers a very positive position once in place.