

AURELIUS MFG CO INC

220 S.W. 8TH ST. - P.O. BOX 508
 BRAHAM, MN 55006
 320-396-3343 FAX 320-396-3346

SOLUTION PROFILE

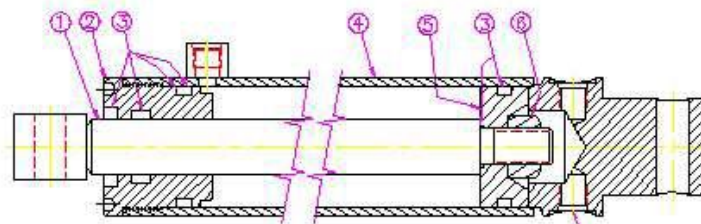
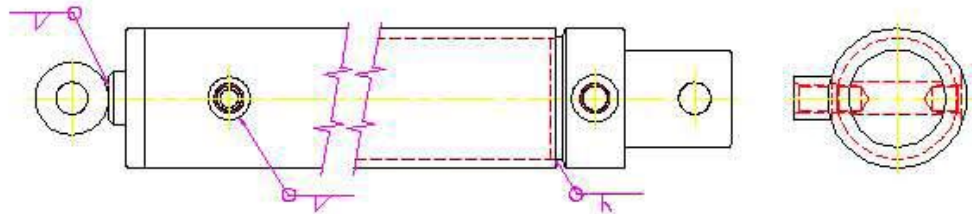


Custom Welded Hydraulic Cylinders

- Bore - 1 to 6 inches
- Rod - 3/8 to 5 inches
 - hollows & specials
- Stroke - 0 to 20 feet
- Custom porting
 - NPT
 - S.A.E. - O-ring
 - tube lines
 - specials
- Custom valving
 - pads
 - cavities
- Integrated sensors
 - linear transducers
 - proximity

Contact
Aurelius Mfg. Co., Inc.

Phone: 320-396-3343
 Fax: 320-396-3346
 Email: info@aurelius-mfg.com



PLUG FLUSH 7/8

WT: LBS.

ITEM	QTY.	PART NO.	DESCRIPTION
1	1		ROD WELDMENT
2	1		END CLAND
3	1		SEAL KIT
4	1		TUBE WELDMENT
5	1		PISTON
6	1		3/4-18UNF LOCKWAF
7	1		ZERO LEAK PLUG
8	1		O-RING FOR PLUG #54201

WEIGHT			
± PL. TOL.	±.005		
± PL. TOL.	±.030		
FINISH	±1/16		
RADIUS	±1"		
DATE	JAH		
TIME			

AURELIUS MFG. CO. INC.
 BRAHAM, MN.

Requirement: A customer was using a right and left hand version of a hydraulic cylinder and was looking for a way to reduce cost.

Solution: The cylinder was redesigned to include both the left and right ports in a one piece end plug. The original design had been used for a number of years and while the end result appears quite simple it took considerable effort to discover the real requirements of the application. The result provided cost reductions by reducing the number of welds from four to two and allowed the customer to buy, stock, and sell one part number instead of two.